



**The Hilltop Institute**

*analysis to advance the health of vulnerable populations*

# Aligning Hospital Community Benefit, Collaborations, Community Health, and Housing

---

November 6, 2015

Gayle D. Nelson, JD, MPH

Solutions for Restoring Neighborhoods, 2015

# What are Hospital Community Benefits?

---

Hospital Community Benefits are ***initiatives, activities, and investments*** undertaken by tax-exempt hospitals to improve the health of the communities they serve.

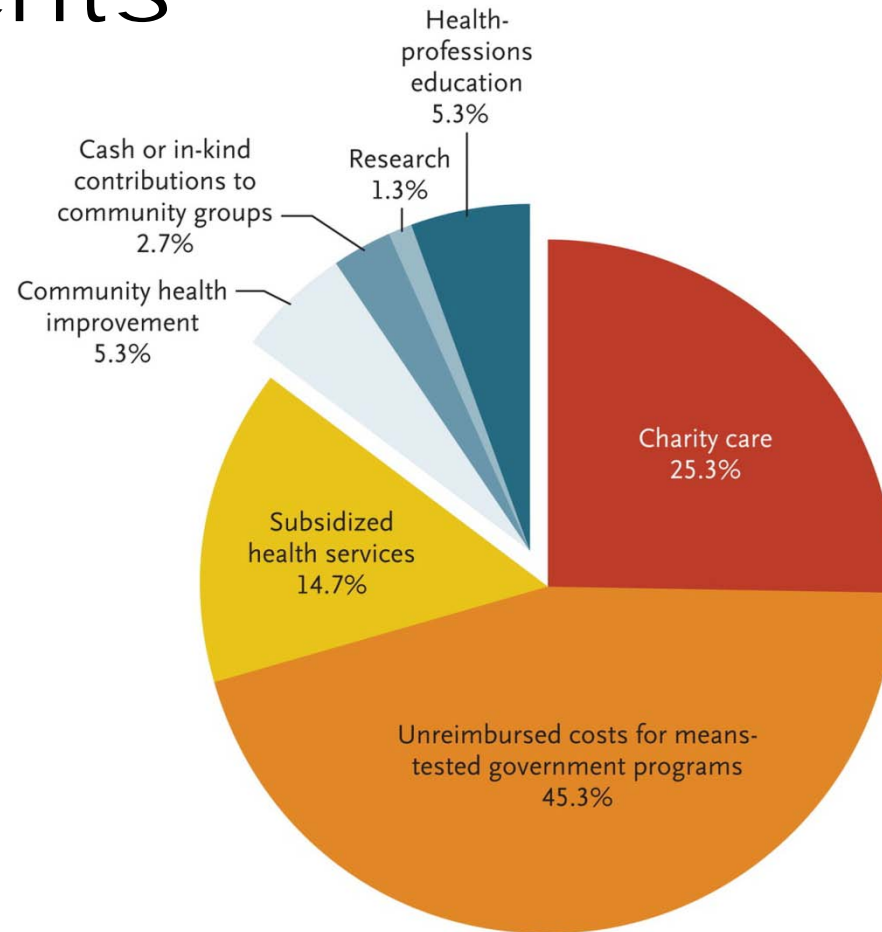
# Estimated Hospital Expenditures

---

**\$62.4 Billion**

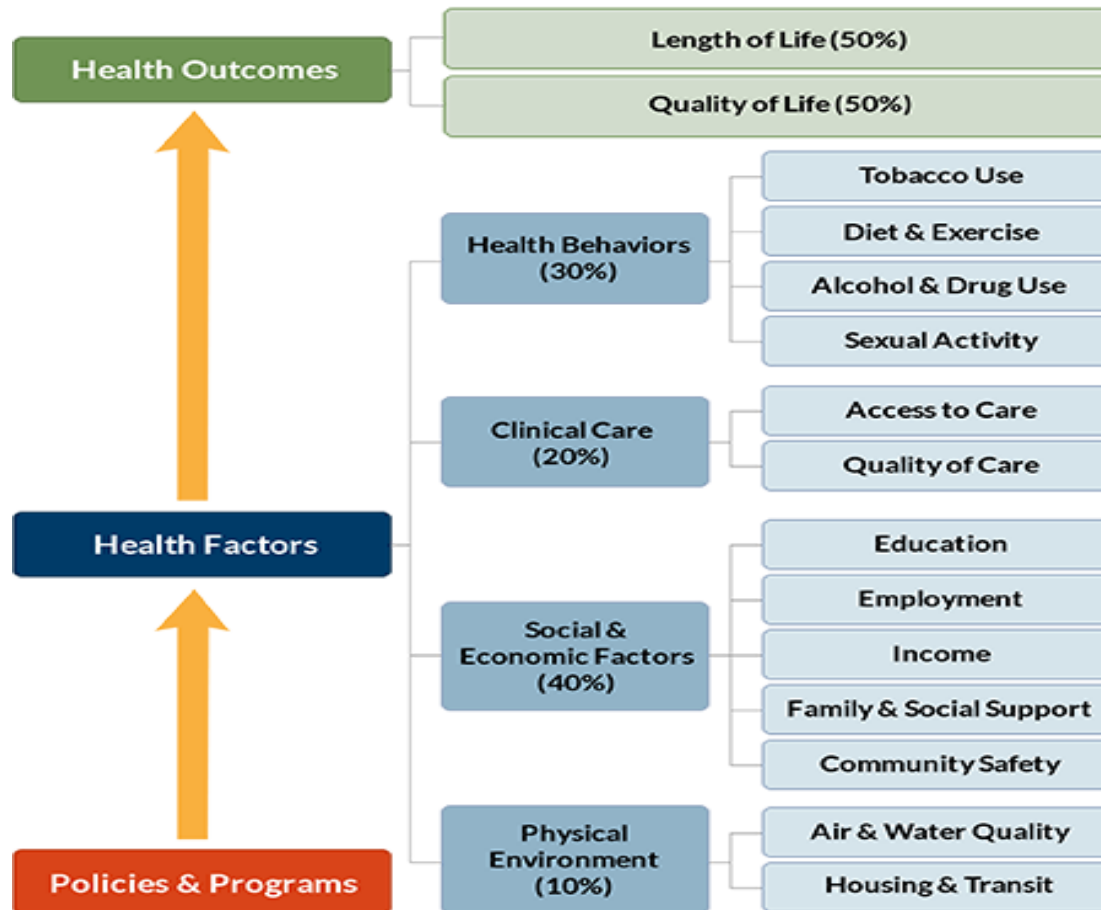
Source: Internal Revenue Service. (2015, January). *Report to Congress on private, tax-exempt, taxable, and government-owned hospitals.*

# Allocation of Community Benefit Investments



Source: [http://www.nejm.org/na101/home/literatum/publisher/mms/journals/content/nejm/2013/nejm\\_2013.368.issue-16/nejmsa1210239/20130412/images/large/nejmsa1210239\\_f1.jpeg](http://www.nejm.org/na101/home/literatum/publisher/mms/journals/content/nejm/2013/nejm_2013.368.issue-16/nejmsa1210239/20130412/images/large/nejmsa1210239_f1.jpeg)

# Model: County Health Rankings & Roadmaps (CHR&R)



County Health Rankings model © 2014 UWPHH

# Communities are unhealthy because of their social and physical environments



jobs



schools



playgrounds/  
parks



transportation

restaurants/  
grocery  
stores



housing



# IRS's 2014 Community Benefit Rules

---

Health needs that a tax-exempt hospital can consider may include “the need to address ... social, behavioral and environmental factors that influence health in the community.”

Source: Internal Revenue Service. (2014, December 31). *2014 Instructions for Schedule H (Form 990)*.

# The Question is ...

---

How can tax-exempt hospitals and the community development and affordable housing sectors collaborate to develop healthy housing and communities?





# About The Hilltop Institute

---

The Hilltop Institute at the University of Maryland, Baltimore County (UMBC) is a nationally recognized research center dedicated to improving the health and wellbeing of vulnerable populations. Hilltop conducts research, analysis, and evaluations on behalf of government agencies, foundations, and nonprofit organizations at the national, state, and local levels.

[www.hilltopinstitute.org](http://www.hilltopinstitute.org)

# Contact Information

---

Gayle D. Nelson

Director, Hospital Community Benefit Program

The Hilltop Institute

University of Maryland, Baltimore County (UMBC)

410.455.6803

[gnelson@hilltop.umbc.edu](mailto:gnelson@hilltop.umbc.edu)